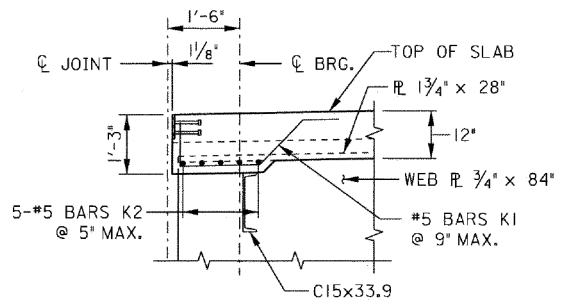


ALABAMA DEPARTMENT OF TRANSPORTATION					
BRIDGE SHEET NO. 6 OF 30		PROJECT NO. ACBRZ59503-ATRP(012) CR 52 OVER CAHABA RIVER STA. 117+65.00 SHELBY COUNTY, ALABAMA			
REVISIONS					
SPAN 1 AND 2 DETAILS (SHEET 1 OF 5)					
ESTIMATED QUANTITIES		DESIGNED BY:	S.M.S.	DRAWN BY:	J.R.C.
COMPUTED BY:		NA	CHECKED BY:	A.S.G.	DATE DRAWN:
VERIFIED BY:		NA	DATE CHECKED:	SCALE:	
BIN:	020819				



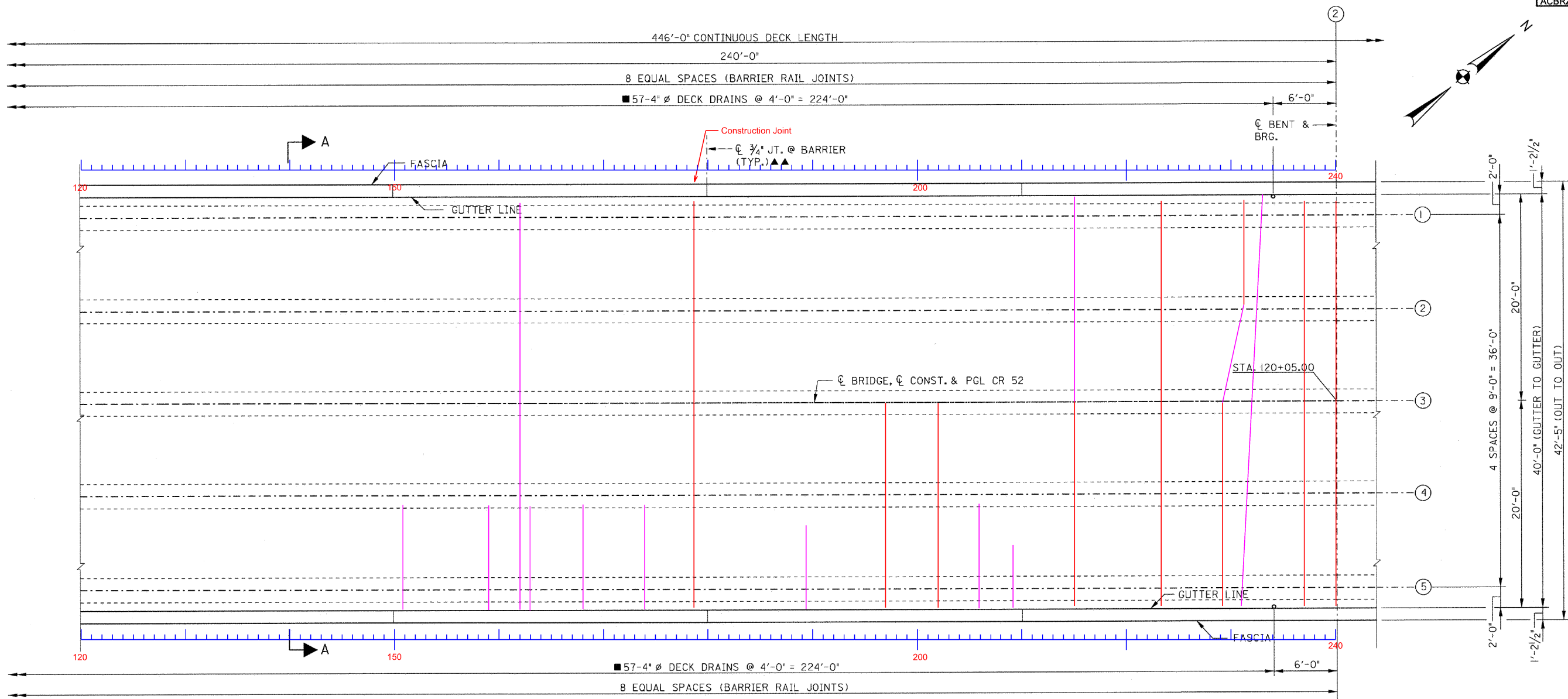
SECTION B-B  
N.T.S.

TRANSVERSE BRIDGE CRACKS  
SHOWN IN COLOR

- NOTES:**
1. FOR JOINT LAYOUT, SEE SHEET NO. 4.
  - ▲ 2. FOR BARRIER RAIL REINFORCEMENT AND DETAILS, SEE SPECIAL PROJ. DWG. NO. BBR-1.
  3. ALL JOINT OPENING DIMENSIONS ARE SHOWN @ 70° F.
  - 4. FOR BRIDGE ARMOR PLATE, SEE SPECIAL PROJ. DWG. NO. SBD-1.
  5. FOR SECTION A-A, SEE SHEET NO. 11.
  6. FOR BILL OF REINFORCEMENT, SEE SHEET NO. 12.
  7. FOR DECK ELEVATIONS, SEE BRIDGE SHEET NO. 20.
  - 8. FOR DECK DRAIN DETAILS, SEE BRIDGE SPECIAL PROJECT DWG. NO. SBD-1.

fabnsavolkert-us-pw\lcs.user\lcs00730\shad 25-JUN-2018 20:13  
User: lcs\_cdr\pnobles  
pwr/project\seavolkert.com\volkert-us-pw\Documents\443800-Sheby\_CR52\_BR/Project\space\Design/Br\dge/Plans\_Assess\BRZ59503-ATRP\012\000000  
Plot: Scale: 3/16" = 1'-0"  
\$\$\$\$DESIGN FILE SPECIFICATIONS\$\$\$  
Plotted: SYSTEM DATE&TIME

REFERENCE PROJECT NUMBER	FISCAL YEAR	SHEET NUMBER
ACBRZ59503-ATRP(012)	2018	207



PARTIAL PLAN  
SCALE: 3/16" = 1'-0"



TRANSVERSE BRIDGE CRACKS  
SHOWN IN COLOR

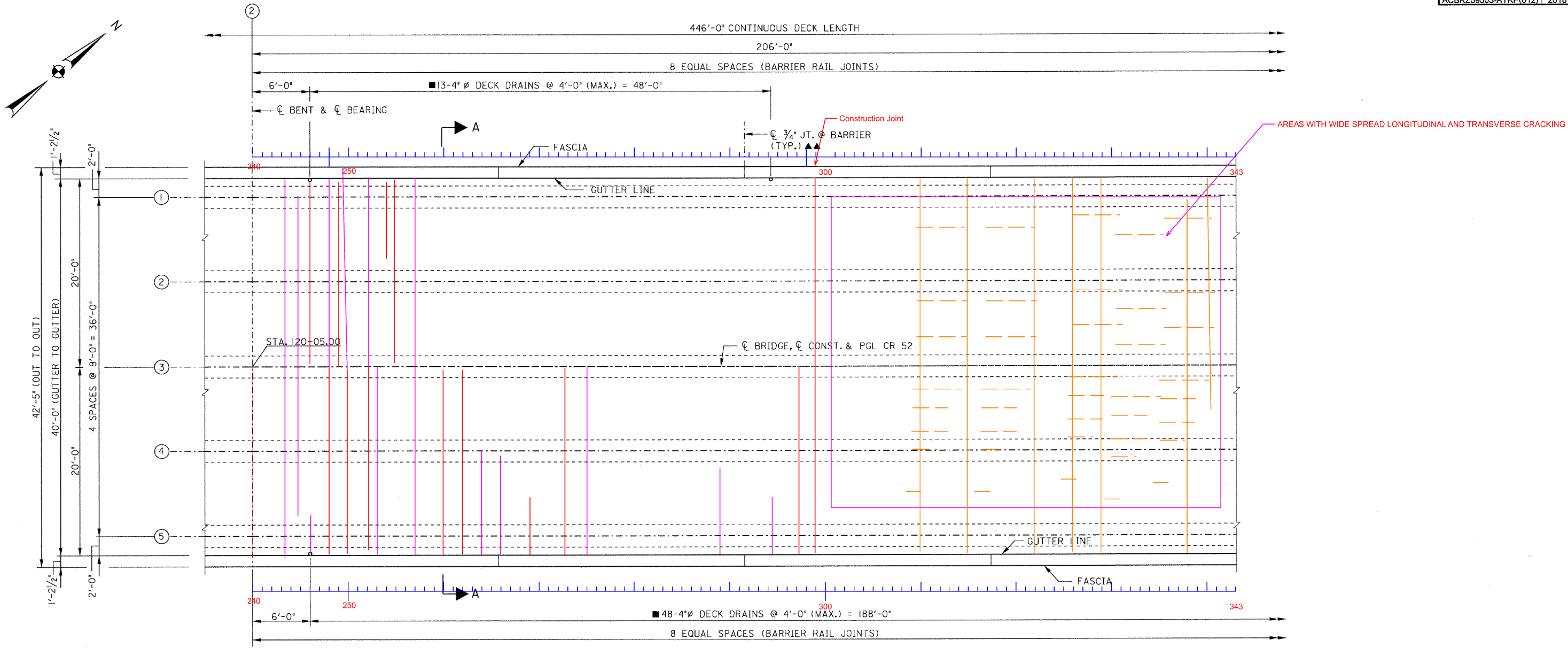
ALABAMA DEPARTMENT OF TRANSPORTATION					
BRIDGE SHEET NO. 7 OF 30		PROJECT NO. ACBRZ59503-ATRP(012) CR 52 OVER CAHABA RIVER STA. 117+65.00 SHELBY COUNTY, ALABAMA			
REVISIONS					
		SPAN 1 AND 2 DETAILS (SHEET 2 OF 5)			
		ESTIMATED QUANTITIES	DESIGNED BY:	S.M.S.	DRAWN BY: J.R.C.
BIN: 020819		COMPUTED BY: NA	CHECKED BY: A.S.G.	DATE DRAWN:	
		VERIFIED BY: NA	DATE CHECKED:	SCALE:	

\\fs01\volker\us-pw\projects\443800-Shelby\CR52\_BR\Project\space\Design\Bridges\Plans-As-Built\Drawings\007301\Structural\pen 5.333001.000000

Plot Scale: 3/16" = 1'-0"

Plotted: SYSTEM DATE&TIME

REFERENCE PROJECT NUMBER	FISCAL YEAR	SHEET NUMBER
ACBRZ59503-ATRP(012)	2018	208



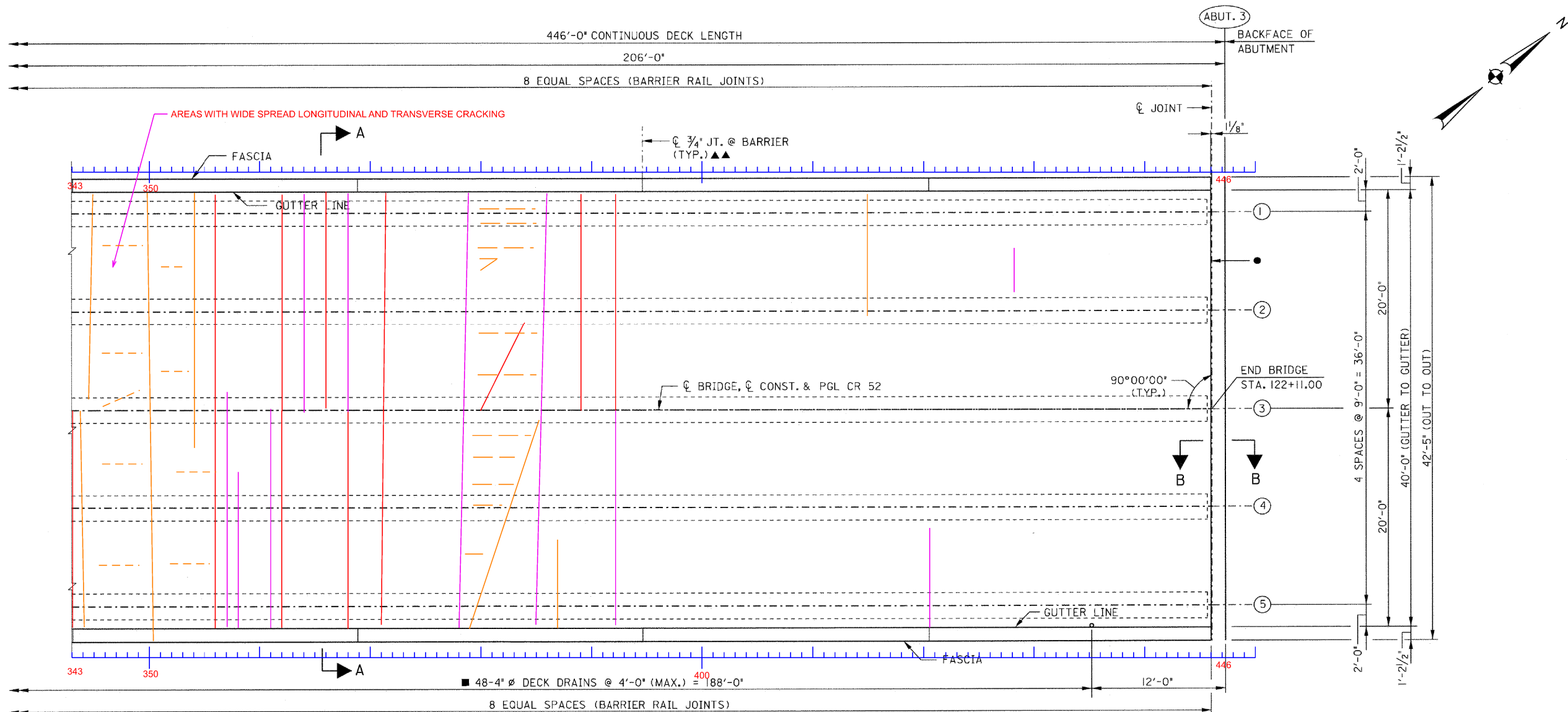
PARTIAL PLAN  
SCALE: 3/16" = 1'-0"

TRANSVERSE BRIDGE CRACKS  
SHOWN IN COLOR

ALABAMA DEPARTMENT OF TRANSPORTATION

BRIDGE SHEET NO. 8 OF 30	PROJECT NO. ACBRZ59503-ATRP(012) CR 52 OVER CAHABA RIVER STA. 117+65.00 SHELBY COUNTY, ALABAMA
REVISIONS	SPAN 1 AND 2 DETAILS (SHEET 3 OF 5)
BIN: 020819	ESTIMATED QUANTITIES DESIGNED BY: S.M.S. DRAWN BY: J.R.C. COMPUTED BY: NA CHECKED BY: A.S.G. DATE DRAWN: VERIFIED BY: NA DATE CHECKED: SCALE:

REFERENCE PROJECT NUMBER	FISCAL YEAR	SHEET NUMBER
ACBRZ59503-ATRP(012)	2018	209



PARTIAL PLAN  
SCALE: 3/16" = 1'-0"

ALABAMA DEPARTMENT OF TRANSPORTATION

BRIDGE SHEET NO. 9 OF 30

REVISIONS

PROJECT NO. ACBRZ59503-ATRP(012)  
CR 52 OVER CAHABA RIVER  
STA. 117+65.00  
SHELBY COUNTY, ALABAMA

SPAN 1 AND 2 DETAILS (SHEET 4 OF 5)

BIN: 020819

ESTIMATED QUANTITIES	DESIGNED BY: S.M.S.	DRAWN BY: J.R.C.
COMPUTED BY: NA	CHECKED BY: A.S.G.	DATE DRAWN:
VERIFIED BY: NA	DATE CHECKED:	SCALE:

TRANSVERSE BRIDGE CRACKS  
SHOWN IN COLOR